

5 AREAS OF SPECIAL EDUCATION PROGRAMMING



ACADEMIC SKILL DEVELOPMENT PROGRAMMING

Special education programming that supports students who exhibit academic difficulty despite strong evidence-based instruction in foundational literacy and/or numeracy skills. The need for Academic Skill Development Programming is determined by comprehensive assessment.



[More information](#)



ACCESSIBILITY SKILL DEVELOPMENT PROGRAMMING

Special education programming that supports students who have a medical diagnosis related to physical functioning, vision, and/or hearing that impacts their ability to access learning. The need for Accessibility Skill Development Programming is determined by comprehensive assessment.

[More information](#)

ADAPTIVE SKILL DEVELOPMENT PROGRAMMING

Special education programming that supports students who have significant difficulties with intellectual and adaptive functioning. The need for Adaptive Skill Development Programming is determined by comprehensive assessment.

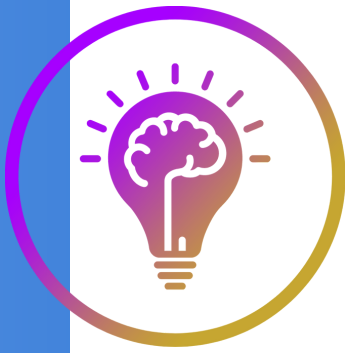


[More information](#)

ENRICHMENT PROGRAMMING

Special education programming that supports students who have demonstrated exceptional intellectual potential and/or performance over a period of time and when compared to others of the same age, experience, and environment. The need for Enrichment Programming is determined by comprehensive assessment.

[More information](#)



SOCIAL-EMOTIONAL/BEHAVIOURAL SKILL DEVELOPMENT

Special education programming that supports students who exhibit significant social-emotional/behavioural difficulty despite strong evidence-based instruction in foundational social-emotional/behavioural skills. The need for Social-Emotional/Behavioural Skill Development Programming is determined by comprehensive assessment.

[More information](#)

